

## Working with .E00 data

By: [Glenn Letham](#), Editor, The GeoCommunity

---

Lots of data at the GISDataDepot is served up in ARC/INFO .E00 format. I can't count the number of times in a day that we at The GeoCommunity receive phone calls and email from people needing help working with this data. The following article attempts to explain in basic, non-technical jargon, how to work with this data.

Data in .E00 is an ARC/INFO interchange file format. this is a simple ASCII file which can be opened and viewed using any common text editor (wordpad, notepad, textpad).

The following gives you an idea what the data looks like:

```
EXP 0 /GISWK/FTP/PUB/TMP20/CNTYS.E00
ARC 2
      1      18114      2      1      2      1      2
-1.9764960E+06 3.1712590E+06-1.9802236E+06 3.1723502E+06
      2      18115      1      2      2      1      4
-1.9802236E+06 3.1723502E+06-1.9810328E+06 3.1690918E+06
-1.9762238E+06 3.1684802E+06-1.9764960E+06 3.1712590E+06
```

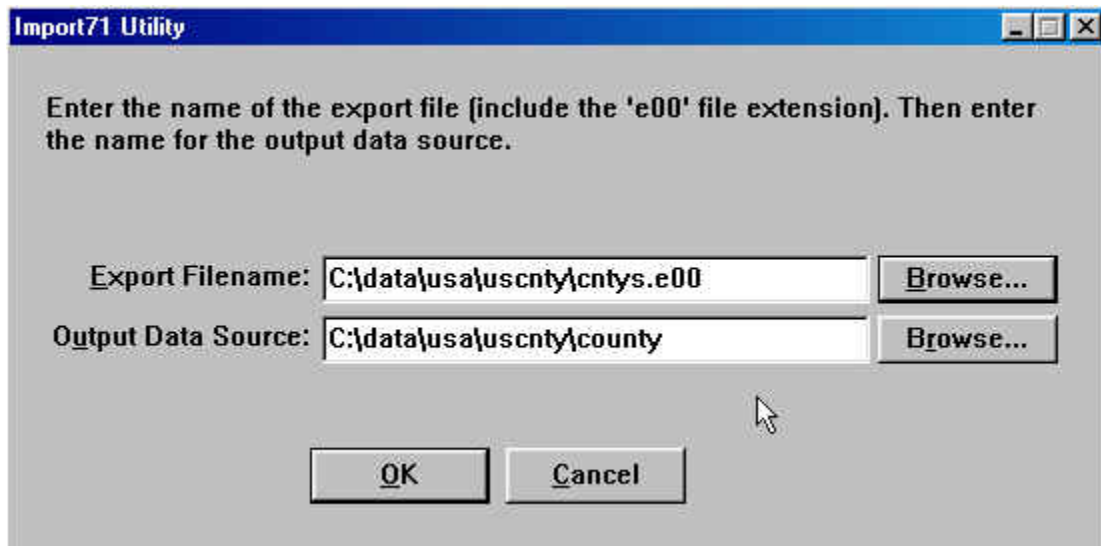
E00 is essentially an interchange data format developed to enable users to move data into and out of ARC/INFO.

## IMPORT71

IMPORT71 is a stand-alone program that converts an ARC/INFO interchange file created on any other operating system into a ARC/INFO 7.x coverage or grid. If you receive ARC/INFO data in interchange format you can use IMPORT71 to convert it to a data source in a format that can be added to a project or view in ArcView (or used in other mapping programs).(Source: ArcView 3.2 help) If you have ArcView GIS you already have IMPORT71... hopefully you know this! For you non-ArcView users, Import71 can also be downloaded from the GeoCommunity software resources. Go to <http://software.geocomm.com/translators/arcview/> to download it.

Steps to run Import71:

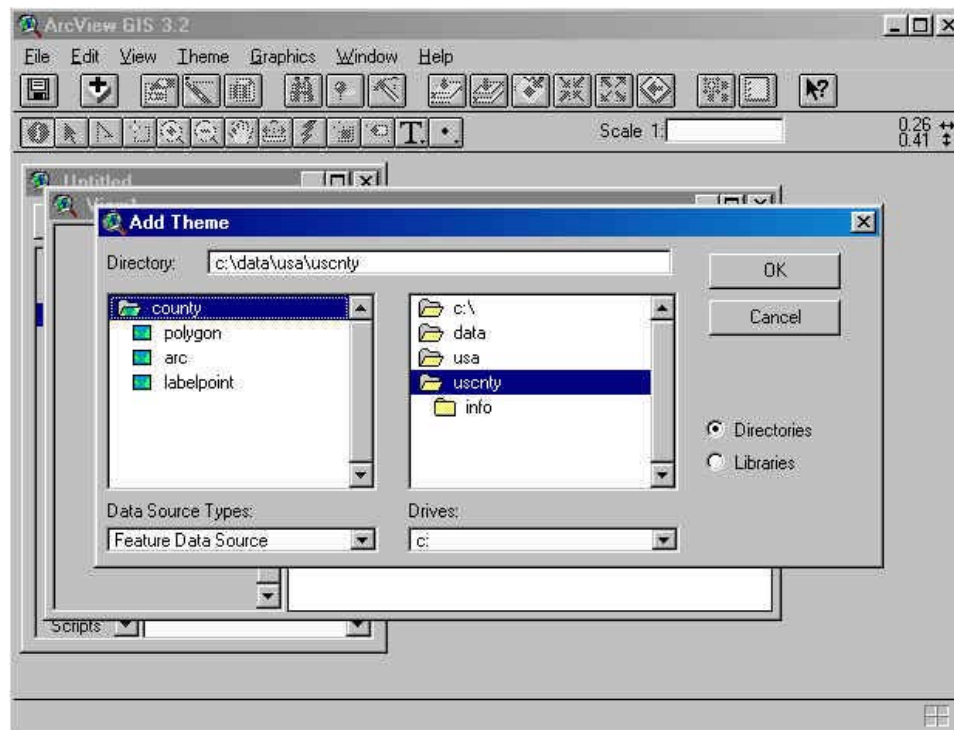
- download import71.exe (1.9 mb)
- run install
- program should now exist in C:\Program Files\ESRI\Import71
- run import71.exe
- specify an import file (the .E00 file)
- specify a location for the resulting output coverage (enter the full directory path and coverage name - no extension needed)



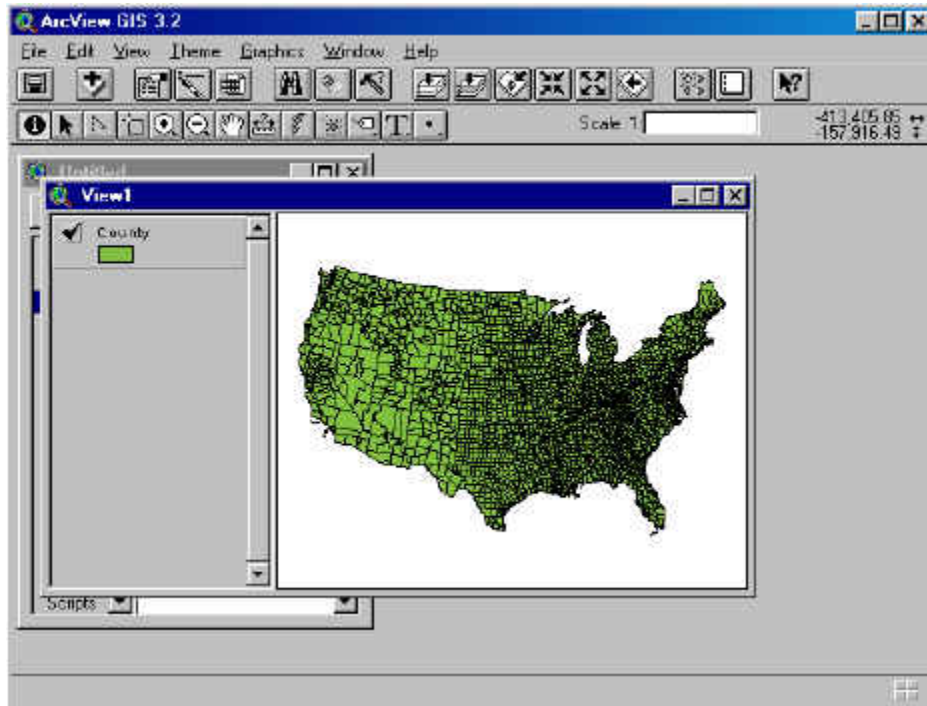
- in this example we are importing a US county data coverage called cntys.e00. The resulting coverage will be store in a directory called "county", note an "info" directory is also created.
- you now have an ARC/INFO coverage that can be acced by a number of programs (including ArcView of course)

## Using the resulting ARC/INFO coverage

**ArcView** - Add Theme/Data Source Type "Feature Data source". Select coverage "county"

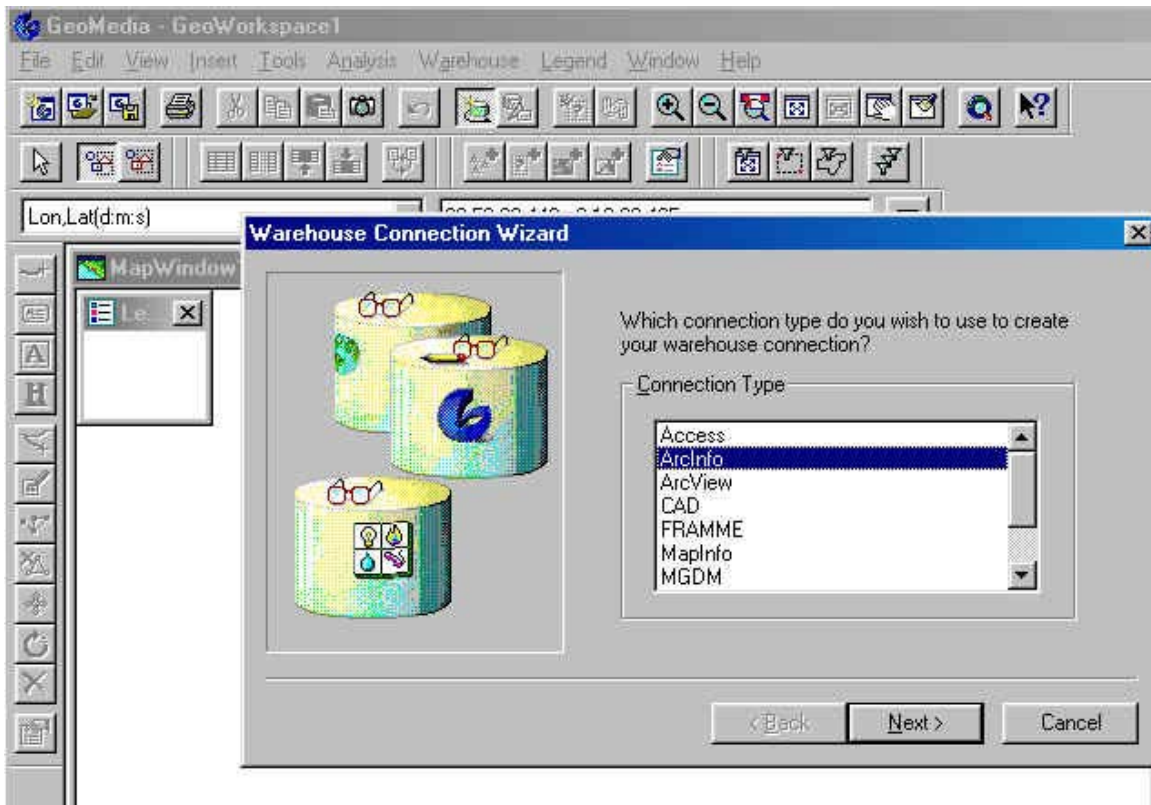


To convert to ArcView .SHP format - Select Theme/Convert to Shape Coverage

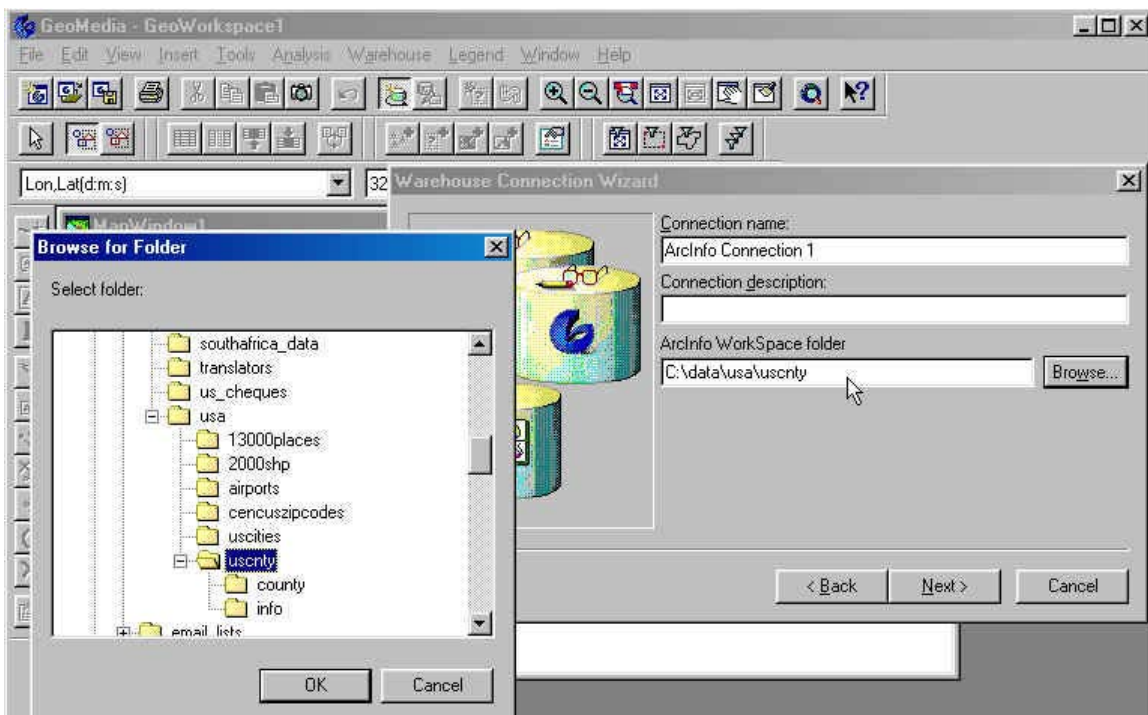


**GeoMedia** - start GeoMedia

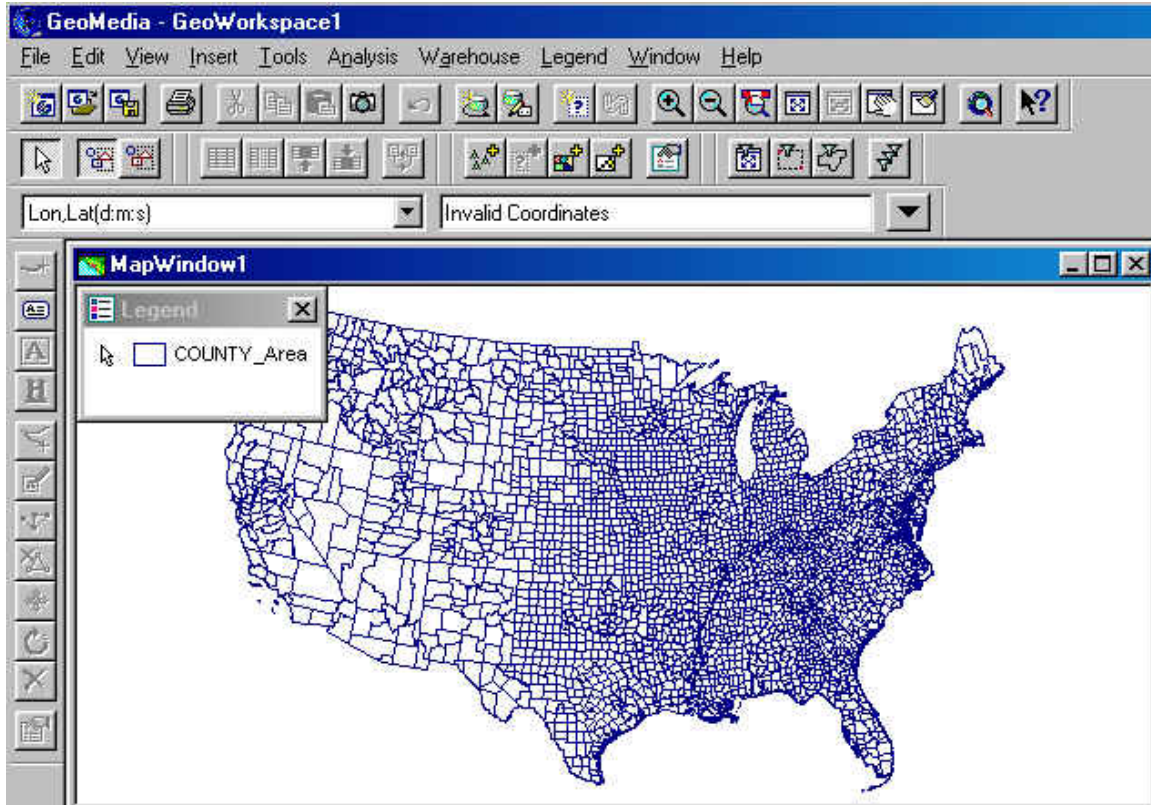
- Create a new GeoWorkspace
- Warehouse/New connection



- assign a connection name and description
- assign the ArcInfo workspace folder (this is the directory where the ARCINFO coverage exists - not the name of the coverage itself).



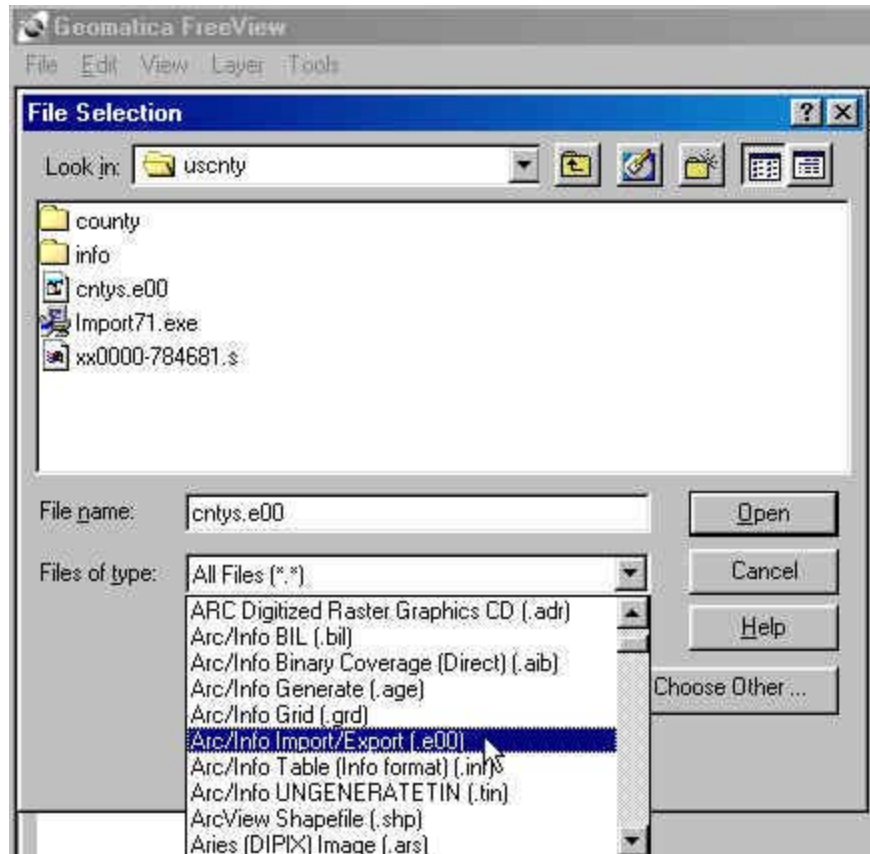
- select access all features in the warehouse
- let the wizard open as read-only
- done!
- To view select Legend/Add FeatureClass County\_area (county area features)



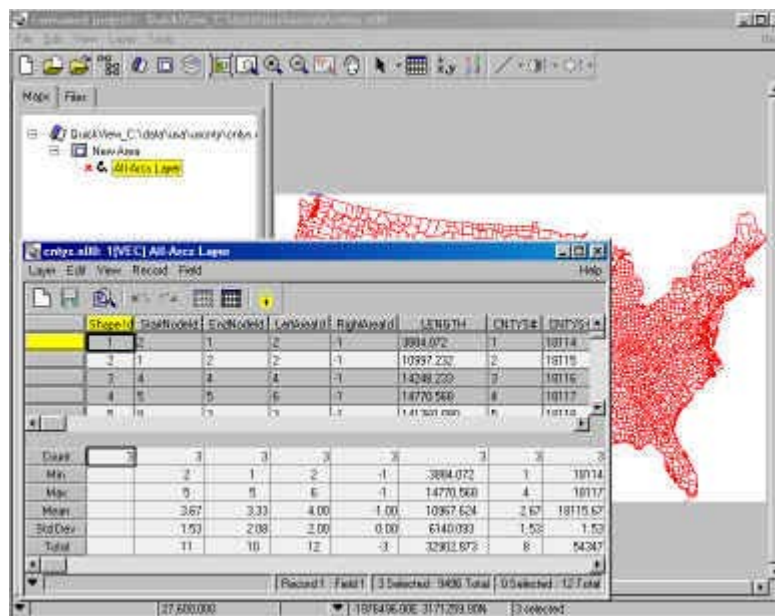
## E00 Viewer

If you just simply want to view a E00 coverage there are a number of data viewing tools available to help you. Visit our Software/Viewers <http://software.geocomm.com/viewers/>

The most recent addition to these free products is GeoMatica™ FreeView from PCI Geomatics This free geomatics software package will allow users to quickly and easily view data directly in a number of common data formats including E00, MIF, DEM, DLG, SDTS, and many more. FreeView can be found at [www.pcigeomatics.com](http://www.pcigeomatics.com).



This program will enable viewing E00 data directly without any translation. Additionally, users can use the "View Layer Attributes" option to view spatial attributes associated with data features.



## **FME from safe.com**

Finally, consider getting yourself the free 30 day fully function evaluation download of FME from safe software <http://www.safe.com/>. FME is the driving force behind the popular Universal Translator that ships with MapInfo (<http://www.mapinfo.com/>) and has become the defacto standard in data conversion software. (*Comment added 01/09/02*)